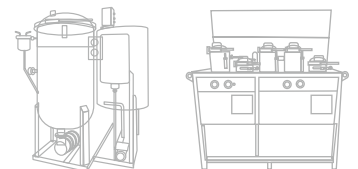


YARN
DYEING | DRYING | CONDITIONING MACHINES





PRODUCT RANGE

HTHP VERTICAL DYEING MACHINE



MODELS

JVD	10	20	30	40	50	60	80	100	150	200	250	300	400	500	800	1000	1500	2000
 Batch (Kg)	10	20	30	40	50	60	80	100	150	200	250	300	400	500	800	1000	1500	2000
 Electric Load (Kw)	3.5	3.5	5	7	7	7	11	13	17.5	22	22	22	26	35	52	65	86	105

- We reserve our rights to make any changes without prior notice
- Batch capacity of the machine may vary according to the material i.e. Polyester, Cotton, Viscose, Silk, Tape, etc.
- Electric load mentioned above is of turbo pump fitted with electric motor and dozing pump
- Scope of delivery and technical specification of the product supplied shall be in accordance with the contract



HTHP Vertical Dyeing Machine is one of our best selling machines since its introduction. Precision engineered High Temperature High Pressure JVD have become the first choice of dyeing plant through out the Textile Dyeing Industry with us having technical experience of around 1000 man years.

JVD has been designed for dyeing almost all natural & handmade fibers like Polyester, Cotton, Viscose, Nylon, Acrylic, Texturised, Silk, Wool in various forms like Cone, Tape, Narrow Fabrics, Zipper, Hanks, Ribbons, Tops & Loose Fiber, Tows, Muffs, etc.

These machines are offered for capacities from 10 kg upto 1500 kg. per batch. However two machines can be coupled to give larger batch size up to 3000 kg. The coupled machines can be run as independent machine also at the press of a button.

Advantages //

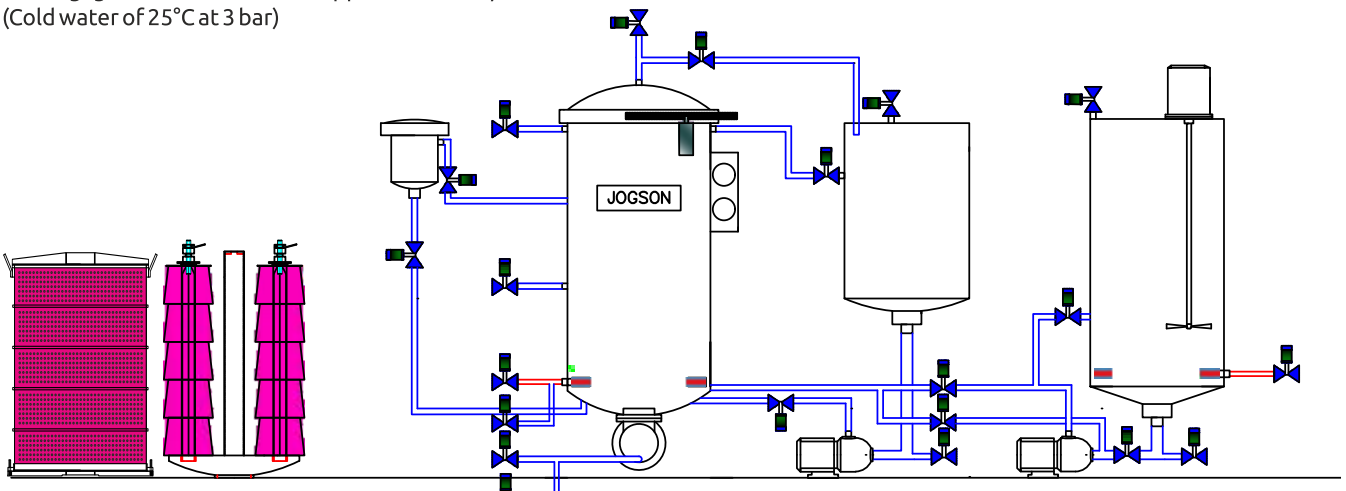
- Compact arrangement of JOGSON Dyeing Pump, Heat exchanger and piping is the main key to floor space saving
- Bi-direction Turbo allows the packages to expand and contract by pressure changes, increasing the effectiveness and evenness in dyeing
- **MLR** achieved down to **1:4**, consumes less dyestuff, chemicals, steam, water & produces less effluent discharge, hence it's **ECO friendly & reduces the production cost** in respect to conventional vertical machines
- Inverter driven turbo pump for variable flow control; saves upto 40% power consumption hence more **Energy Efficient**
- HT Drain at 130°C for oligomers elimination during polyester dyeing process, shortern batch time, effectively removes excess water from the packages
- **Variable loading** with dummies & airpad maintains constant **MLR & Flow Rate**
- Reduced loading with single direction pump mode, airpad and partial fill minimizes MLR
- **Interchangeable dyeing carriers** for Cones, Loose Fiber, Fabric, Muffs, Tops, Bobbin, etc.
- Excellent dyeing result and levelness, reduces yarn loss
- Water level, pressure, distinctive temperature multiple safety interlock, ensure operational safety

Salient Features //

- Machine body and all parts coming into contact with the dye liquor are made of AISI SS 316Ti/316L, highly corrosion resistant
- Bi-direction Turbo pump single / double stage for liquor circulation (In-Out & Out-In) with Inverter Drive for varying the speed
- Control panel with JOGSON Dyeing controller, PLC & touch interface (Optional)
- MLR of 1:4.5 (Fully Flooded) 1:4 (Air Pad System)
- Air pad System creates static pressure in the vessel and minimizes the liquor ratio
- Dosing Tank with Injection Pump for dozing the dye liquor into the machine
- High efficient heat exchanger for indirect Heat/cool inside the machine having no heat loss to the ambient
- Variable loading with flexible loading spindles or capacity reducing dummies upto 50% capacity
- HT Drain - the machine can be drained at 130° C without cooling
- Sampling Pot to check the dyeing result while machine is in operation
- Pneumatically operated Top Lid Open / Close, secured with clamp type locking arrangement
- Human / Machine Safety Interlocks

Technical Data //

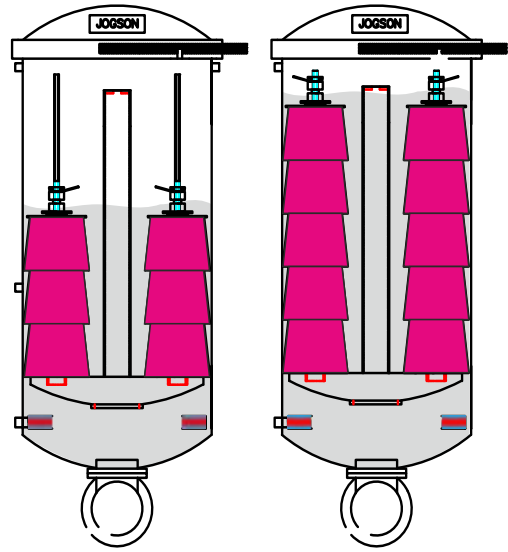
- Maximum design pressure 5 bar
- Maximum design temperature 140°C
- Heating gradient 25°C - 130°C approx at 5°C/min. (Dry saturated steam pressure at 7 bar)
- Cooling gradient 130°C-85°C approx at 3.5°C/min. (Cold water of 25°C at 3 bar)



PULSED FLOW DYEING METHOD //

- Pulsed flow for ultra saving of energy and liquor
- carrier is designed with participant allowing dye liquor to circulate through each partition at a time with the help of actuator valves
- Vessel can partially / fully filled
- Saves of up to 70% electricity, 30% water and 20% heat energy
- As it is completely innovative concept, it ensures both relevant saving of costs and overall improvement in the quality of the final dyed product
- Pulsed flow method allows variable loading upto 50% of the machine capacity at nearly constant MLR
- This model is available in various capacities ranging between 30 Kg and 1000 Kg per batch

VARIABLE
LOADING

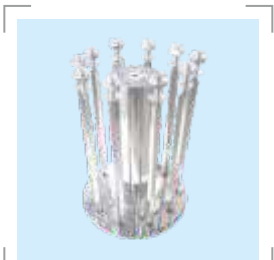


Optional Features //

- Multiple fill
- Multiple drain
- Various heating medium such as electric heaters, thermic fluid, steam & gas/diesel burner
- 100% capacity Stock Tank with heating & mixing stirrer and transfer pump
- ph meter
- Hydro extraction device
- DPT for ratio fill/metered fill/partial fill
- Linear and progressive dosing
- Package unloading basket



Fiber Cage / Top Carrier



Cones / Bobbin Carrier



Control Panel



DOUBLE
DECKER



JOGINDRA INDUSTRIES PVT. LTD.

AN ISO 9001:2015 CERTIFIED COMPANY

Regd. Office :

R-5/69, Rama Road, Najafgarh Road Industrial Area,
New Delhi-110015, India

Works :

A-590 C1, Phase-1, RIICO Industrial Area,
Bhiwadi-301019, Rajasthan, India



+91-11-45034934




info@jogson.com



www.jogson.com



Scan This QR Code For
More Details

For Business Enquiries  +91-9999 127227